



AG-01 Series

Apply to all Tie-Rod Cylinder, Round Cylinder and Mickeymouse Cylinder.

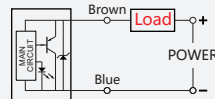


Model	AG-01DF	AG-01N(P)	AG-01S
Sensor logic	Normally Open	Normally Open	
Output type	2 Wire Solid State	NPN(PNP) Current Sinking	NPN/PNP Automatic Detection
voltage range	10 ~ 30V DC	5 ~ 30V DC	
Sensor current	1 ~ 50 mA	0 ~ 100 mA	
Sensor Rating	1.5 W Max.	3 W Max.	
Consumption	/	3 mA Max.@24V	3mA Max.@24V
Voltage drop	2.65 V Max.@50mA DC	0.8V Max.@200mA DC	0.8V Max.@200mA
Leakage current	90 μ A Max.@28V	0.01 mA Max.	
Indicator	Red LED	Red LED(Green LED)	Red LED
Cable	Φ 2.8,2C,Grey Oil-Resistant PVC	Φ 2.8,3C,Grey Oil-Resistant PVC	
Sensitivity	40 ~ 800 Gauss	40 ~ 800 Gauss	
Sensor frequency	900Hz	900Hz	
Temperature	-10 ~ 70°C	-10 ~ 70°C	
Shock	50G	50G	
Vibration	9G	9G	
Protection circuit	Surge Suppression	Power Reverse Polarity; Surge Suppression	

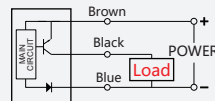
1. Operating voltage of AG-01R-QD8 is 60V AC/DC (Based on IEC61076-2-101).
2. Measuring standard target: 15.5 * 8 * 5t(Anisotropic Plastic Magnet).
3. Sin Wave / X, Y, Z 3 Directions / 3 Times Each Direction / 11mS Each Time.
4. Double Amplitude 1.5mm / 10Hz~55Hz~10Hz(Sweep 1min) / X, Y, Z 3 Directions / 1Hour Each Time.

Connect diagram

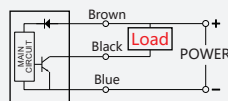
AG-01DF



AG-01P

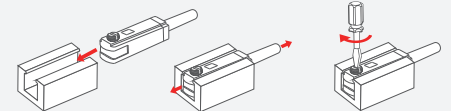


AG-01N



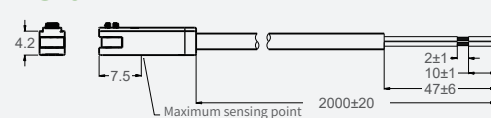
AG-01 Magnetic sensor

1. Place from behind the groove.
2. Adjust to fit.
3. Tighten the screws for fixing.

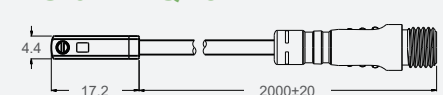


Product Specifications (Unit: mm)

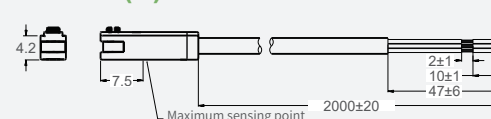
AG-01DF



AG-01DF-QC8



AG-01N(P)



AG-01N(P)-QC8

