

# AG-38 Series

## Specifically for short-stroke cylinders.

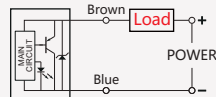


Model	AG-38DF	AG-38N	AG-38P
Sensor logic	Normally Open	Normally Open	
Output type	2 Wire Solid State	NPN(PNP) Current Sinking	NPN/PNP Automatic Detection
voltage range	10 ~ 30V DC	5 ~ 30V DC	
Sensor current	1 ~ 50 mA	0 ~ 100 mA	0 ~ 100 mA
Sensor Rating	1.5 W Max.	3 W Max.	3 W Max.
Consumption	/	3 mA Max.@24V	3 mA Max.@24V
Voltage drop	2.65V Max.@50mA DC	0.8V Max.@200mA DC	0.8V Max.@200mA DC
Leakage current	90 $\mu$ A Max.@28V	0.01 mA Max.	
Indicator	Red LED	Red LED	Green LED
Cable	$\Phi$ 2.8,2C,Grey Oil-Resistant PVC	$\Phi$ 2.8,3C,Grey Oil-Resistant PVC	
Sensitivity	40 ~ 800 Gauss	40 ~ 800 Gauss	
Sensor frequency	900Hz	900Hz	
Temperature	-10 ~ 70°C	-10 ~ 70°C	
Shock	50G	50G	
Vibration	9G	9G	
Protection circuit	Surge Suppression	Power Reverse Polarity; Surge Suppression	

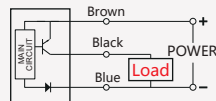
1. Operating voltage of AG-38R-QD8 is 60V AC/DC (Based on IEC61076-2-101).
2. Measuring standard target: 15.5 \* 8 \* 5(Anisotropic Plastic Magnet).
3. Sin Wave / X Y Z 3 Directions /3Times Each Direction / 11mS Each Time.
4. Double Amplitude 1.5mm / 10Hz~55Hz~10Hz(Sweep 1min) / X Y Z 3 Directions / 1Hour Each Time.

### Connect diagram

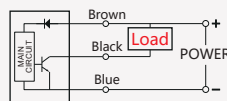
#### AG-38 DF



#### AG-38 P

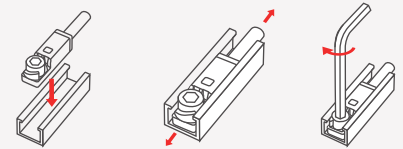


#### AG-38 N



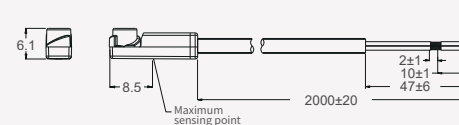
### AG-38 Magnetic sensor

1. The switch is mounted from above the groove.
2. Adjustable switch position.
3. Tighten the screws and install it.

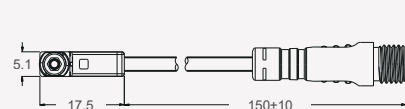


### Product Specifications (Unit: mm)

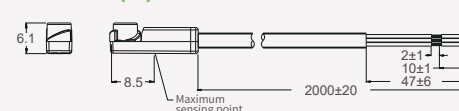
#### AG-38DF



#### AG-38DF-QC8



#### AG-38N(P)



#### AG-38N(P)-QC8

