

AG-39 Series

For all T slots(FESTO, SMC,Parker, etc.)

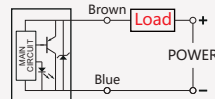


Model	AG-39DF	AG-39N	AG-39P
Sensor logic	Normally Open	Solid State Output, Normally Open	
Output type	2 Wire Solid State	NPN(PNP) Current Sinking	NPN/PNP Automatic Detection
voltage range (1.)	10 ~ 30V DC	5 ~ 30V DC	
Sensor current	1 ~ 50 mA	0 ~ 200 mA	0 ~ 100 mA
Sensor Rating	1.5 W Max.	6 W Max.	3 W Max.
Consumption	/	3 mA Max.@24V	7.5 mA Max.@24V
Voltage drop	2.65V Max.@50mA	0.5V Max.@200mA DC	1V Max.@100mA DC
Leakage current	90 μ A Max.@28V	0.1 mA Max.	
Indicator	Red LED	Red LED (Green LED)	Red LED
Cable	Φ 2.9,2C,Grey Oil-Resistant PUR	Φ 2.9, 3C, Black Oil-Resistant PUR	
Sensitivity (2.)	40 ~ 800 Gauss	40 ~ 800 Gauss	
Sensor frequency	900Hz	900Hz	
Temperature	-10 ~ 70°C	-10 ~ 70°C	
Shock (3.)	50G	50G	
Vibration (4.)	9G	9G	
Protection circuit	Surge Suppression	Power Reverse Polarity; Surge Suppression	

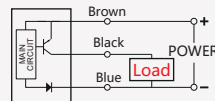
1. Operating voltage of AG-39R-QD8 is 60V AC/DC (Based on IEC61076-2-101).
2. Measuring standard target: 15.5 * 8 * 5(Anisotropic Plastic Magnet).
3. Sin Wave / X Y Z 3 Directions /3Times Each Direction / 11mS Each Time.
4. Double Amplitude 1.5mm / 10Hz~55Hz~10Hz(Sweep 1min) / X Y Z 3 Directions / 1Hour Each Time.

Connect diagram

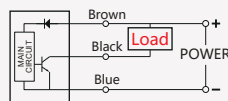
AG-39DF



AG-39P

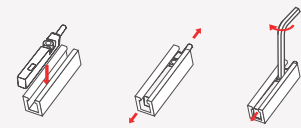


AG-39N



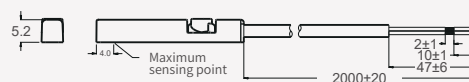
AG-39 Magnetic sensor

1. The switch is mounted from above the groove.
2. Adjustable switch position.
3. Tighten the screws and install it.

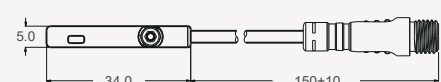


Product Specifications (Unit: mm)

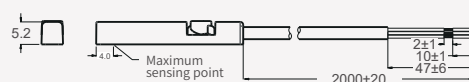
AG-39DF



AG-39DF-QC8



AG-39N(P)



AG-39N(P)-QC8

